

Photometric Report

ERA 600-CRI filter – Medium

MARTIN PROFESSIONAL R&D OPTICAL LABORATORY

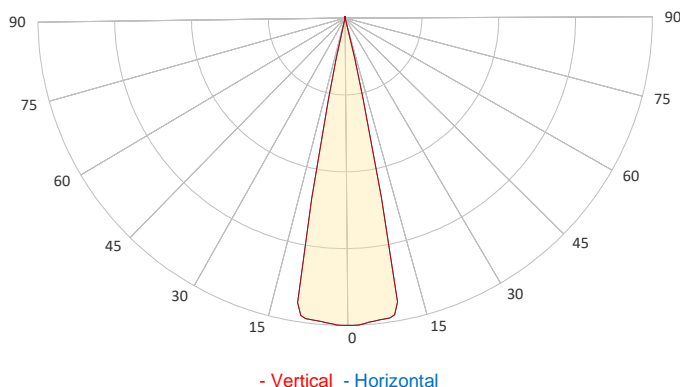
GENERAL SPECIFICATIONS

Total Fixture Output:	13000 lm
Light Engine Output:	37 klm
Efficacy:	17 lm/W
Lens Option:	N/A
Beam Angle (50%):	6-40°
Field Angle (10%):	°
Cut-off Angle (3%):	°
CRI:	79
CQS:	74
TM-30 Rf:	75
TM-30 Rg:	98
TLCI:	56
Color Temperature:	6500 K



SAMPLE MEASUREMENT

POLAR PLOT

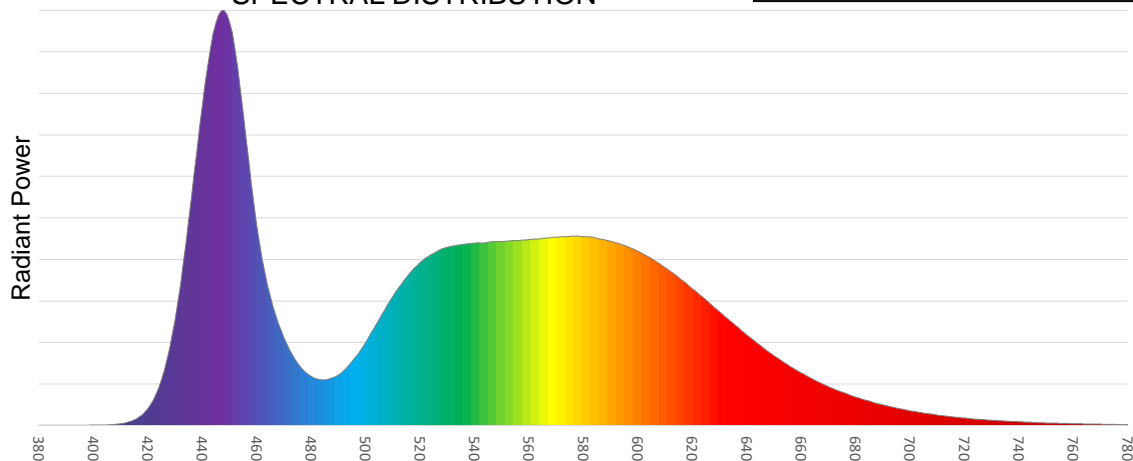


Catalog Number:	ERA 600 CRI Boost Filter
MAR-91614058	
Measured Output:	12308 lm
Measured Peak:	94554 cd
Consumed Power:	742.9 W
Efficacy:	17.1 lm/W

Beam Angle (50%):	22.6°
Field Angle (10%):	26.5°
Cut-off Angle (3%):	27.7°

Measurement Condition:	
Ambient Temperature:	25° +/- 5° C
AC Supply:	230V/50Hz
Fan Mode:	
Fixture Warm-up Time:	60 minutes

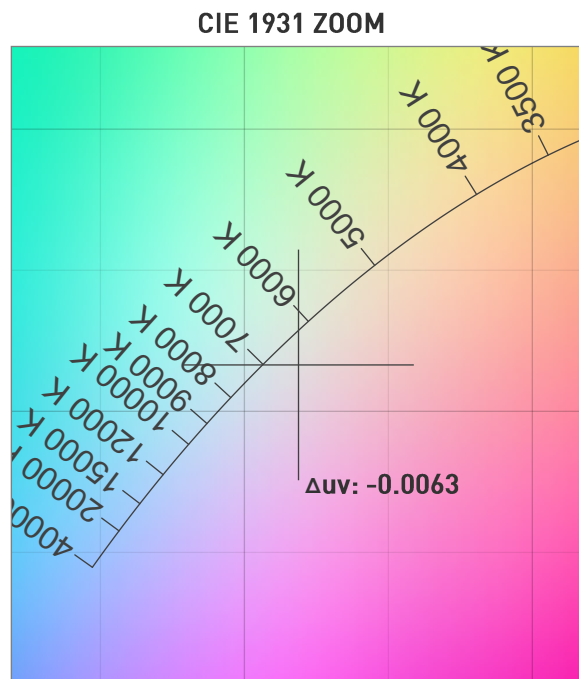
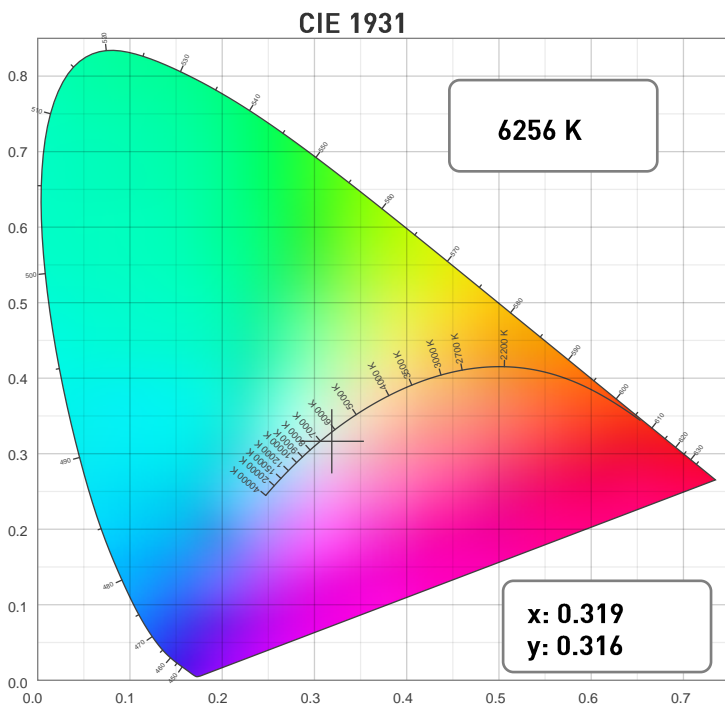
SPECTRAL DISTRIBUTION



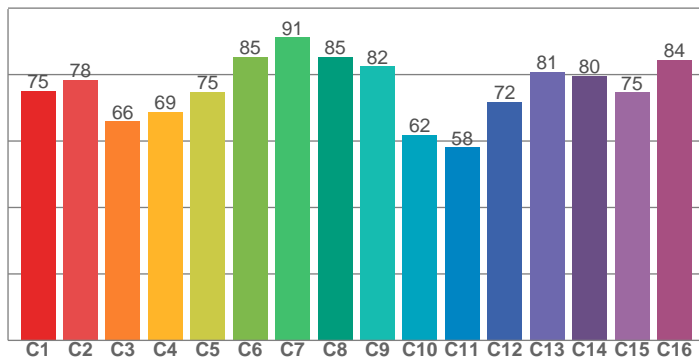
Photometric Report

ERA 600-CRI filter – Medium

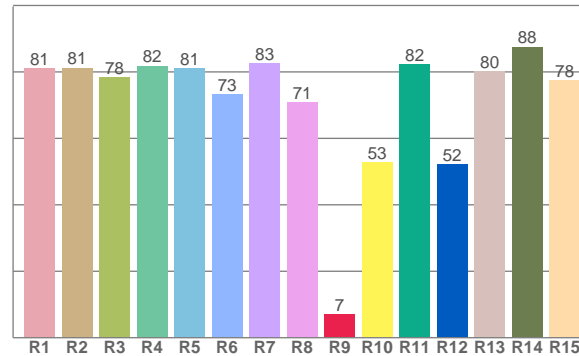
CHROMATICITY



TM30: 75.5



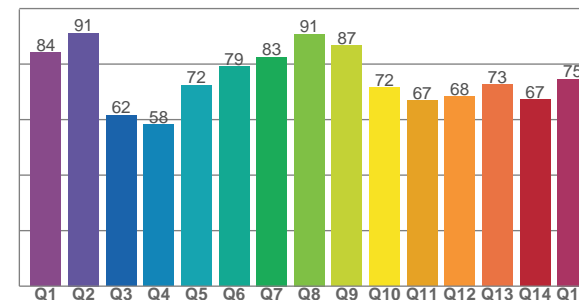
CRI: 78.8 (R1-R8)



COLOR PARAMETERS

Color Temperature	Color Rendering Index	Red Component	Color Fidelity	Color Gamut
CCT	CRI	CRI R9	TM30 Rf	TM30 Rg
6256 K	78.8	7.1	75.5	98.8

CQS: 73.3



Television Lighting Consistency Index	Color Quality Scale	Color Coordinate CIE 1931	Color Coordinate CIE 1931	Color Coordinate CIE 1964	Color Coordinate CIE 1964	Color Deviation from Black Body
TLCI	CQS	x	y	u	v	Δuv
56	73.3	0.319	0.316	0.207	0.308	-0.0063

Photometric Report

ERA 600-CRI filter – Medium

TM30

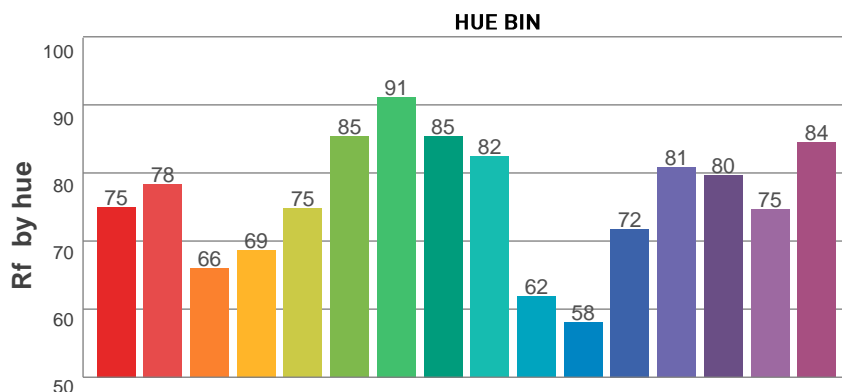
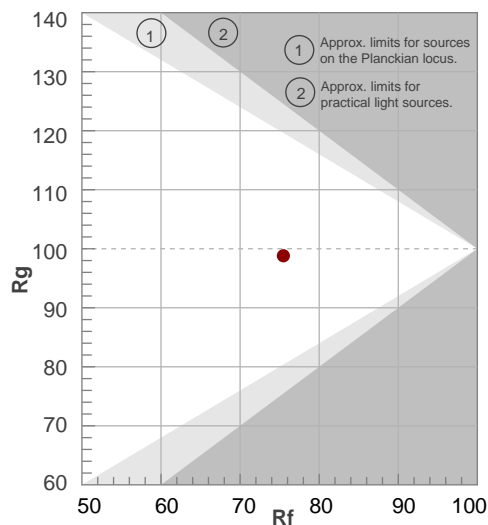
Rf 75.5

Fidelity index Rf

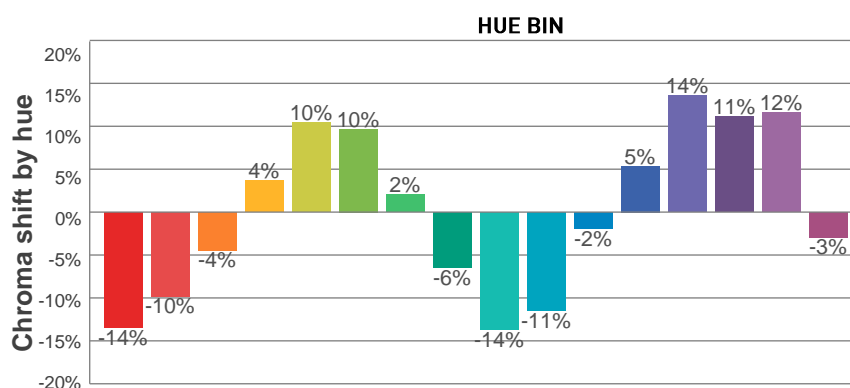
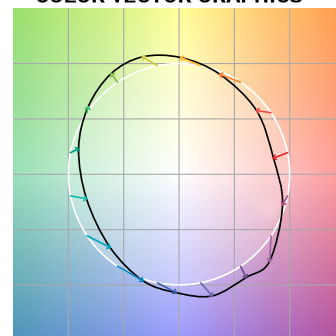
Rg 98.8

Gamut index Rg

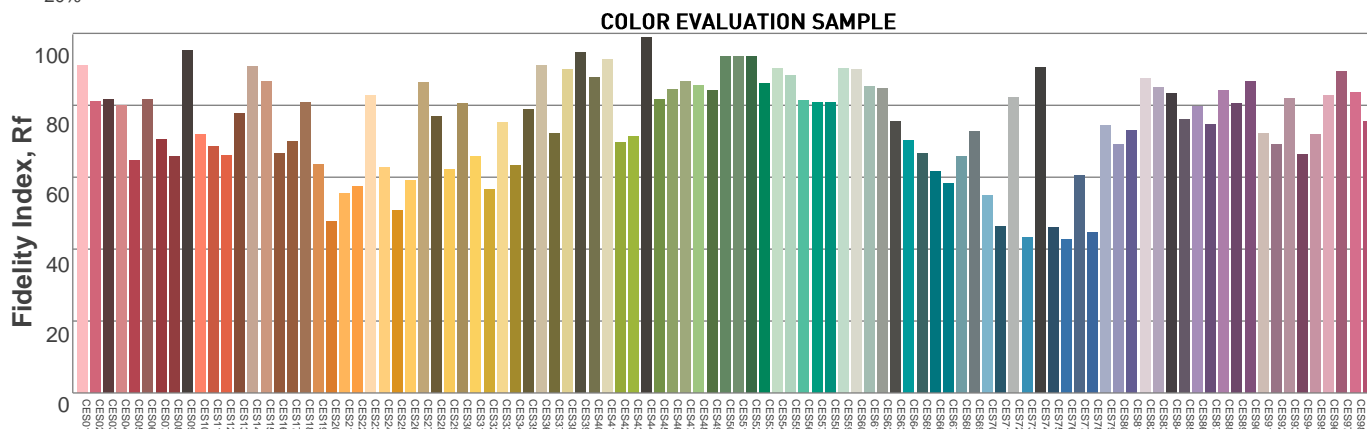
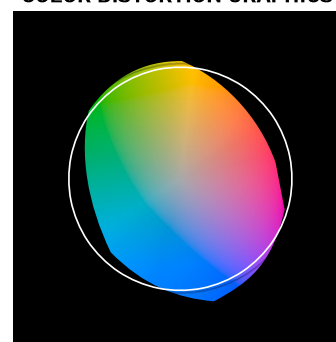
Hue Bin	Rf	Graphic shifts (%)	
		Chroma	Hue
1	75	-14%	-2%
2	78	-10%	9%
3	66	-4%	19%
4	69	4%	19%
5	75	10%	12%
6	85	10%	0%
7	91	2%	-5%
8	85	-6%	-5%
9	82	-14%	5%
10	62	-11%	20%
11	58	-2%	26%
12	72	5%	18%
13	81	14%	8%
14	80	11%	-1%
15	75	12%	-20%
16	84	-3%	-9%



COLOR VECTOR GRAPHICS



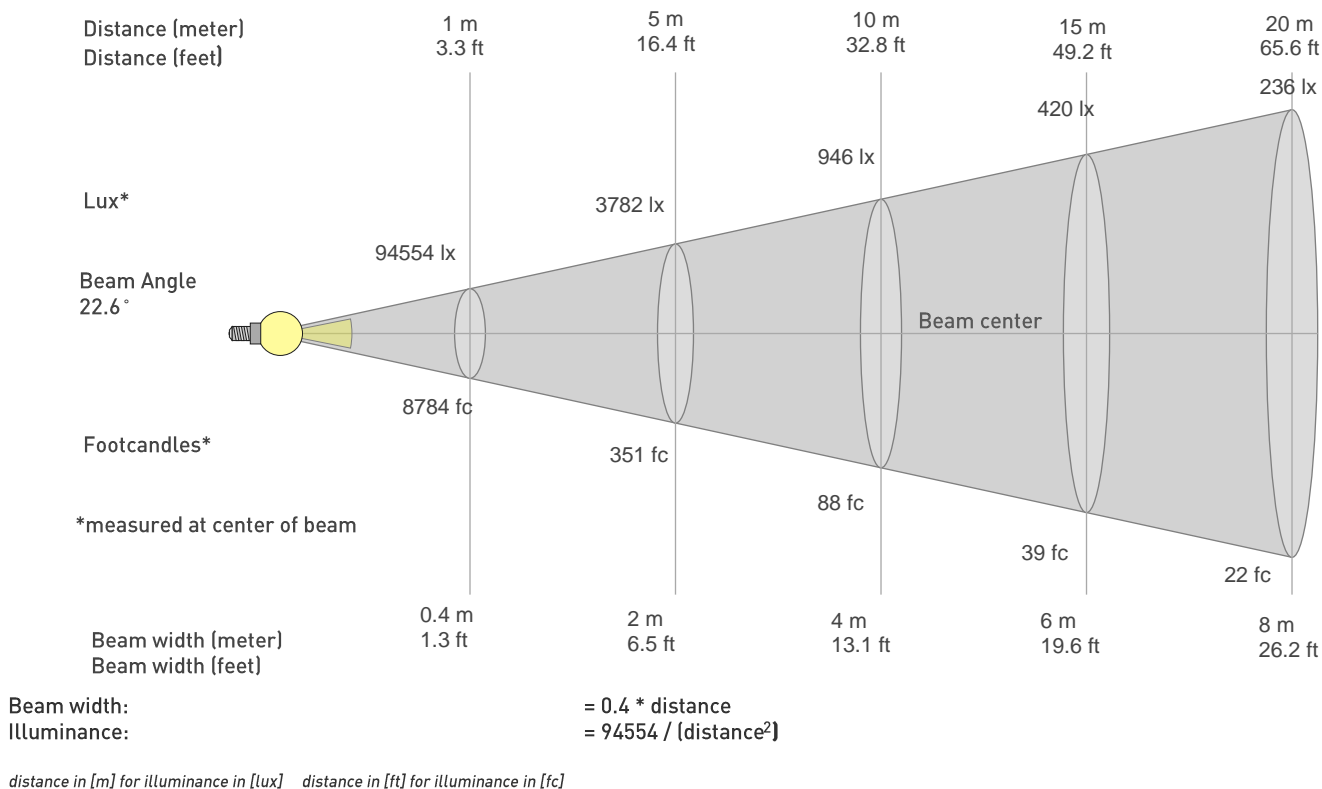
COLOR DISTORTION GRAPHICS



Photometric Report

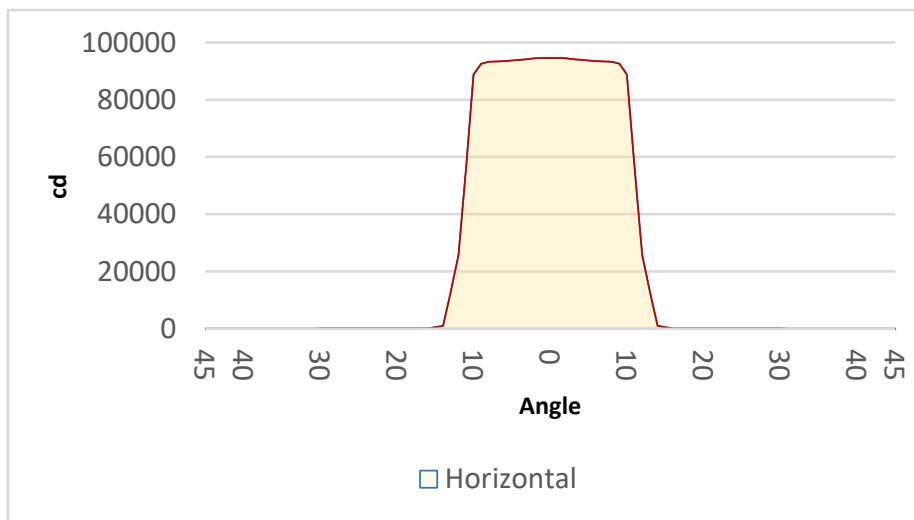
ERA 600-CRI filter – Medium

BEAM DETAILS



BEAM ILLUMINANCE FROM 1-20M

1m	2m	3m	4m	5m	6m	7m	8m	9m	10m	11m	12m	13m	14m	15m	16m	17m	18m	19m	20m
3.3ft	6.6ft	9.8ft	13.1ft	16.4ft	19.7ft	23ft	26.2ft	29.5ft	32.8ft	36.1ft	39.4ft	42.7ft	45.9ft	49.2ft	52.5ft	55.8ft	59.1ft	62.3ft	65.6ft
94554lx	23639lx	10506lx	5910lx	3782lx	2627lx	1930lx	1477lx	1167lx	946lx	781lx	657lx	559lx	482lx	420lx	369lx	327lx	292lx	262lx	236lx
8784.4fc	2196.1fc	976fc	549fc	351.4fc	244fc	179.3fc	137.3fc	108.4fc	87.8fc	72.6fc	61fc	52fc	44.8fc	39fc	34.3fc	30.4fc	27.1fc	24.3fc	22fc



BEAM ANGLE 50%	FIELD ANGLE 10%	CUTOFF ANGLE 3%
22.6°	26.5°	27.7°